

iAGE520ES-PM  
Tower-5Bay Non-RAID Enclosure

**iStarUSA**  
iStar, Good Start!



# USER'S MANUAL

# 1. Product Overview

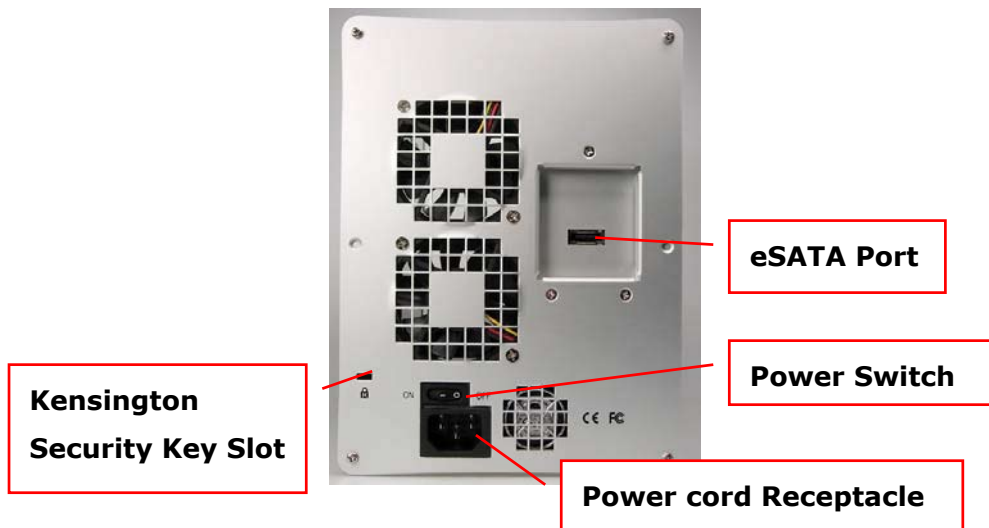
<b>Features:</b>	
<ul style="list-style-type: none"> <li>* Aluminum housing, anodized surface, benefits for cooling and durability</li> <li>* Small, compact, and light weight</li> <li>* Backplane design for four removable SATA drive trays</li> <li>* Built-in cooling fans for self-contained ventilation</li> <li>* Individual key lock of each HDD tray for physical security</li> <li>* LED indicators for power and activity on each HDD tray</li> <li>* Environmental monitoring with FAN/TEMP LED indicators and MUTE button</li> </ul>	
<b>Descriptions:</b>	
<p>It is a five Bay Hot-Swap Serial ATA Enclosure featuring environmental monitoring. It provides a low cost and high performance external data backup solution; It will bring the convenience of data back up ability by SATA interface.</p>	
<b>Specifications:</b>	
Host Interface	SATAII
HDD Interface	SATAI/II
Data Transfer Rate	3.0 Gbps
Hot-Swap	Both on Host and Device
LED Display	White – Power on indicator Blue – Busy (HDD Accessing) indicator
Alarm	Mutable buzzer for FAN/TEMP error.
LED Display for Environmental Monitoring	POWER on LED - white FAN normal – green; fail – red (too slow rpm or stop) TEMP normal – green; over 55°C – red ※ We strongly recommend customers to replace a new fan ASAP after the fan failed.
Cooling	Two 60 x 60 x 10 mm Cooling Fans
Dimension	(L):23.15cm (W):15.68cm (H):20.97cm
Material	Anodized Aluminum with Mirror Acrylic plastic front panel & Plastic tray face
Power Supply	150W

	Input: 90 – 230 VAC 50- 60 Hz Output: +5V and +12V DC
System Required	Silicon Image SiI3132 PCI-E or SiI3124 PCI-X with eSATA (external SATAII shielding) port
O.S. support	OS independent
<p><b>Package Content:</b></p> <ul style="list-style-type: none"> <li>- Enclosure x 1</li> <li>- HDD Tray x 5</li> <li>- SATAII Shielding Cable x 1</li> <li>- Power Cord x 1</li> <li>- Manual CD-ROM x1</li> <li>- Hard Disk Drive mounting screw x 20</li> <li>- Key for HDD tray x 2</li> </ul>	

## 2. Quick Installation Guide



- Connect SATA cable from Host to SATA port.
- Connect power cord.
- Turn on power switch, then you can start playing this unit.



### 3. About Port Multiplier Solution

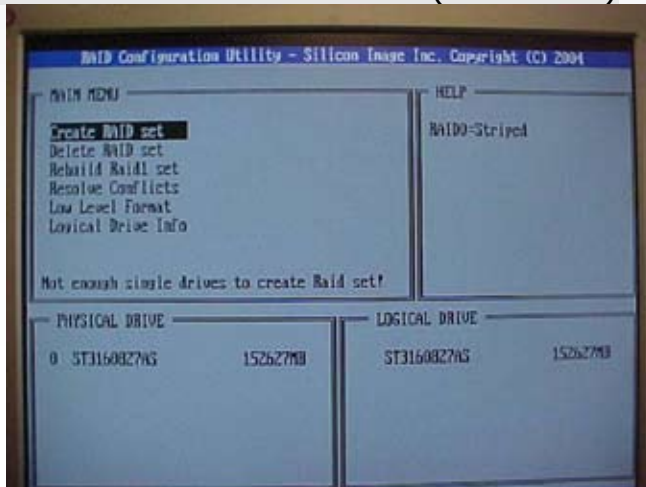
Features and Benefits:

- Built-in Port Multiplier chip to control Max. 5HDD
- Just 1 eSATA cable to control Max. 5HDD (Max. cable performance 3.0G per cable)
- Shielding connector ensure the frequent plug/unplug as USB
- Compliant with Silicon Image SiI3124-2 SATAII PCI-X or SiI3132 SATAII PCI-Express with eSATA port



## 4. Frequently Asked Questions

Q: Why does the controller show only 1 HD connected, not possible to make RAID with RAID BIOS? (see below)



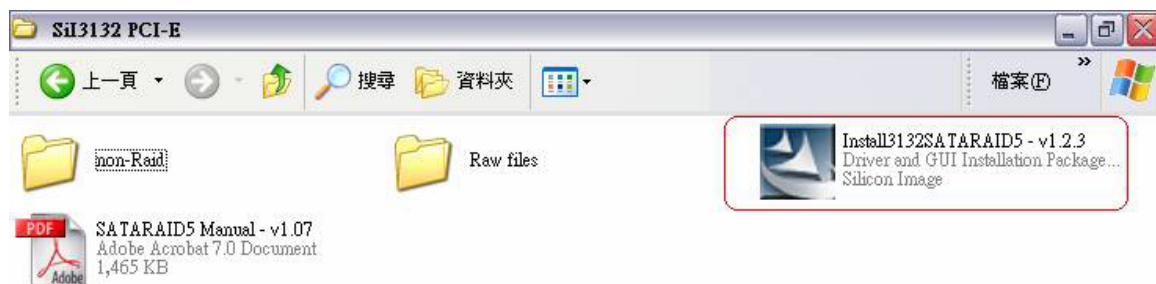
A: Please ignore this step.

Due to Silicon Image firmware limitation, you'll see only ONE HDD via BIOS -- no matter your **host interface**, Motherboard-built-in or HBA (host bus adapter), SiI3124 PCI-X or SiI3132 PCI-Express, is RAID or non-RAID version.

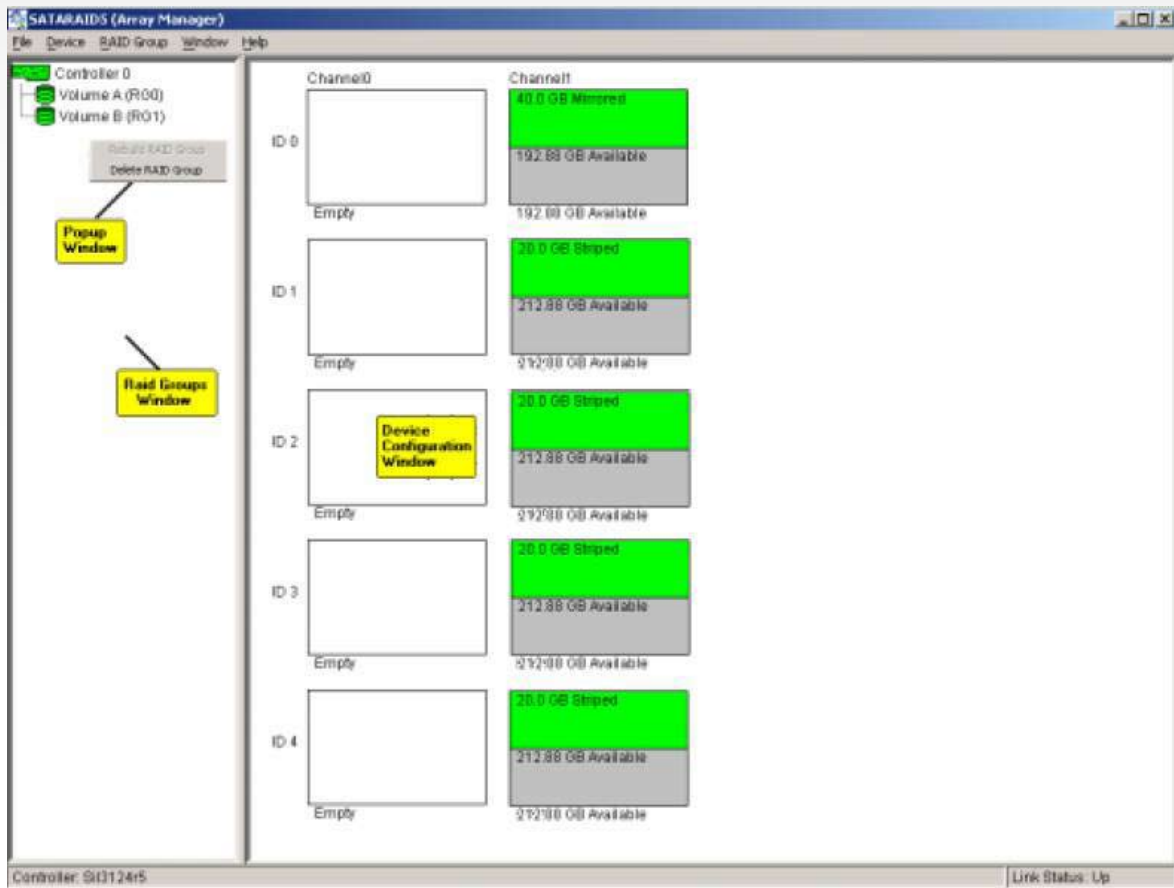
Please just WAIT until [entering the Windows Operating System](#).

- With non-RAID version, you'll see all drives installed via DISK MANAGER.
- With RAID version,  
Install GUI (Array Manager) software (usually bundled with the manual/driver CD supplied by **host interface** supplier).

i.e.



You'll see all disks installed via the software.



Q: Why does the bundled GUI software support only 4 HDDs in RAID5 configuration

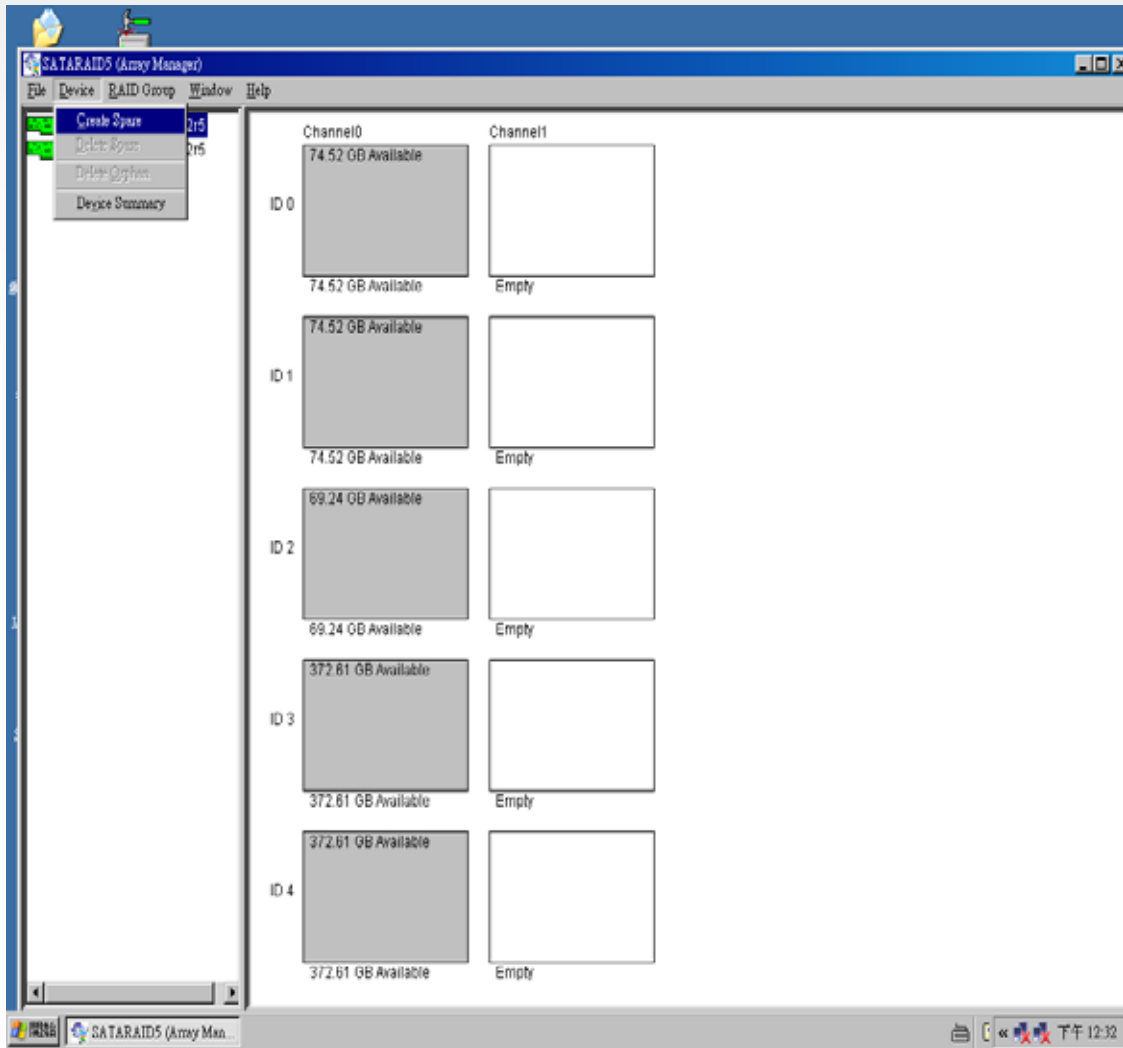
A: It's presently Silicon Image firmware limitation. They promise to release an update to solve this problem. Pls contact your **host interface supplier**.

Q: Following previous issue, how can I use all (five) HDDs of the enclosure while the GUI just can RAID four HDDs??

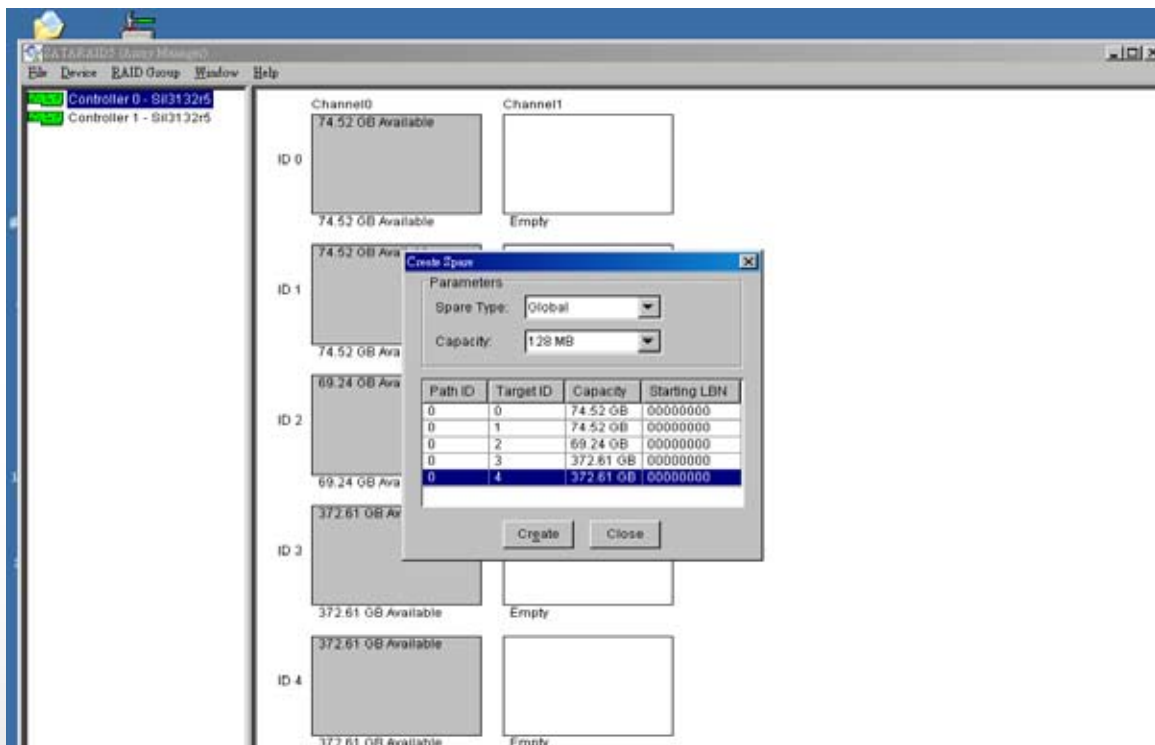
A: It's possible to make following RAID configurations: RAID 5 with hot-spare & RAID10 with hot-spare, both require 5 HDs and therefore use all 5 bays of the enclosure.

Q: Following previous issue, how can I configure RAID5+Spare with the GUI?

A: You will see 5 HDD in Array Manager

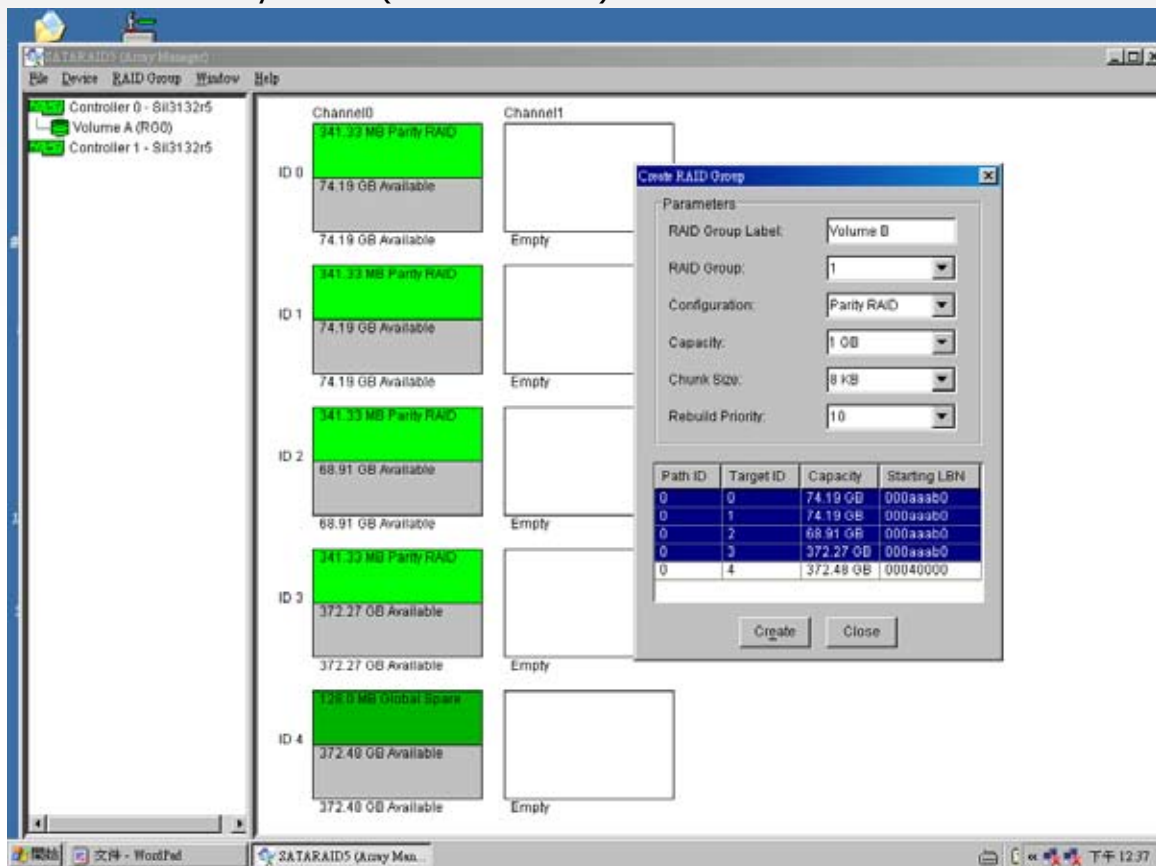


### Create Spare HDD

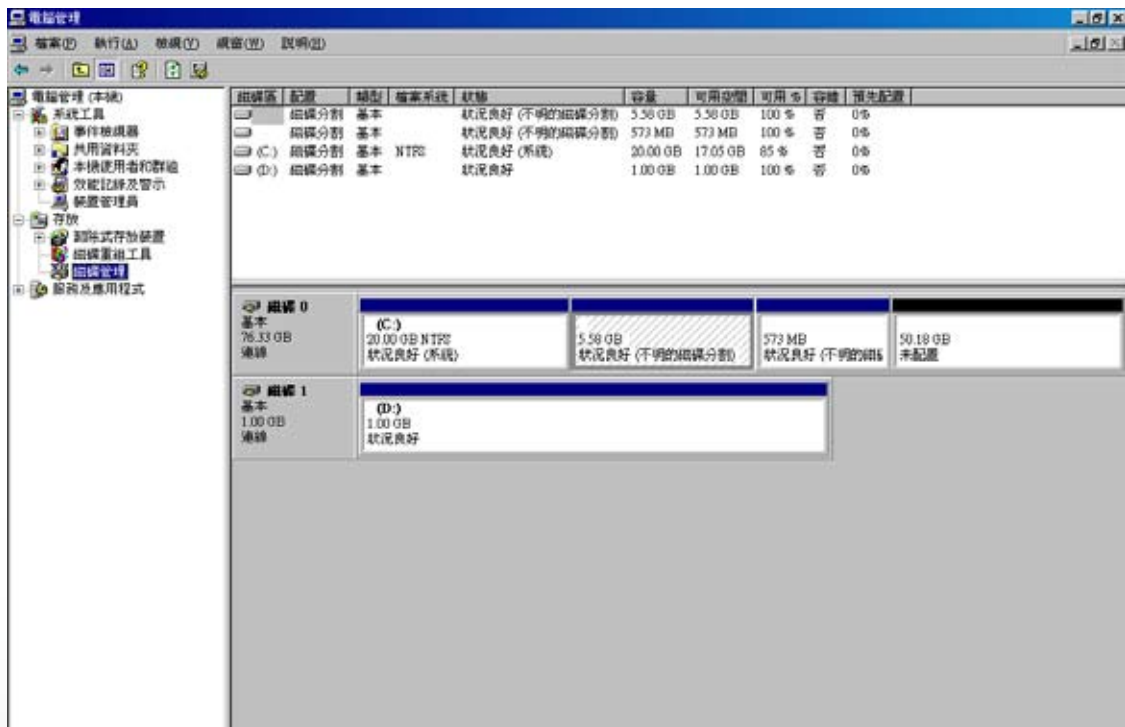


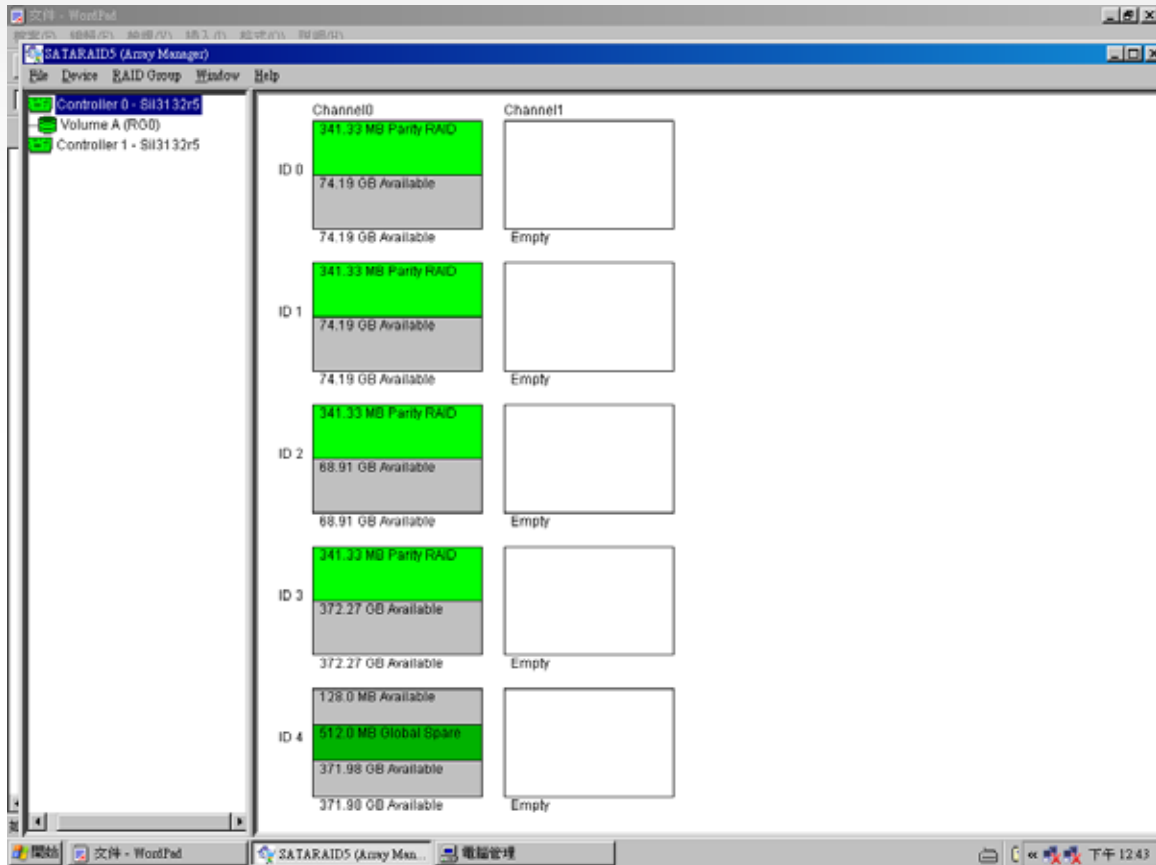


## Create 1G Parity RAID ( 4 HDD Max )



You will see 1G HDD in disk management





Q: Does the enclosure support HOT-SWAP of HDDs???

A: Definitely yes, except RAID 0, with RAID or non-RAID of **host interface**.

Q: Does the Port Multiplier solution support **AUTO rebuilding** of HDDs???

A: Only when configure via GUI via "Hot-Spare" drive.

Take RAID5+S as sample:

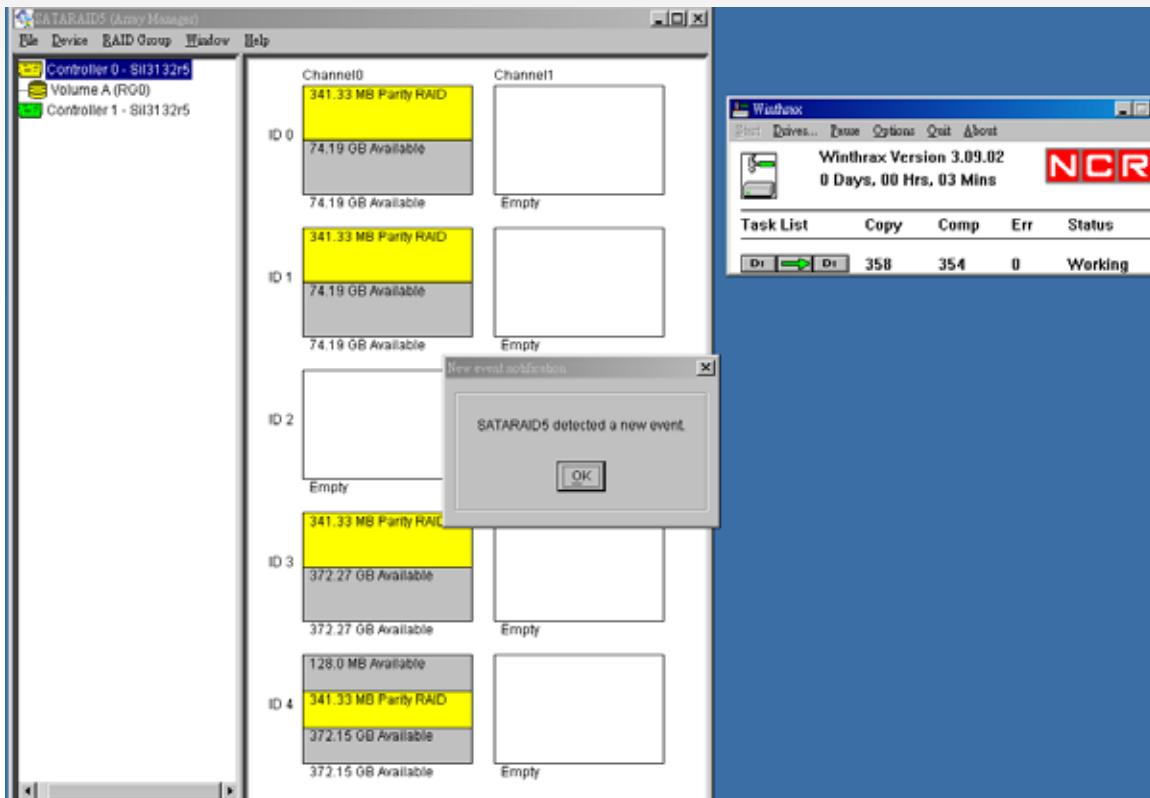
HDD1 – HDD4 are created to RAID 5 and now is accessing.



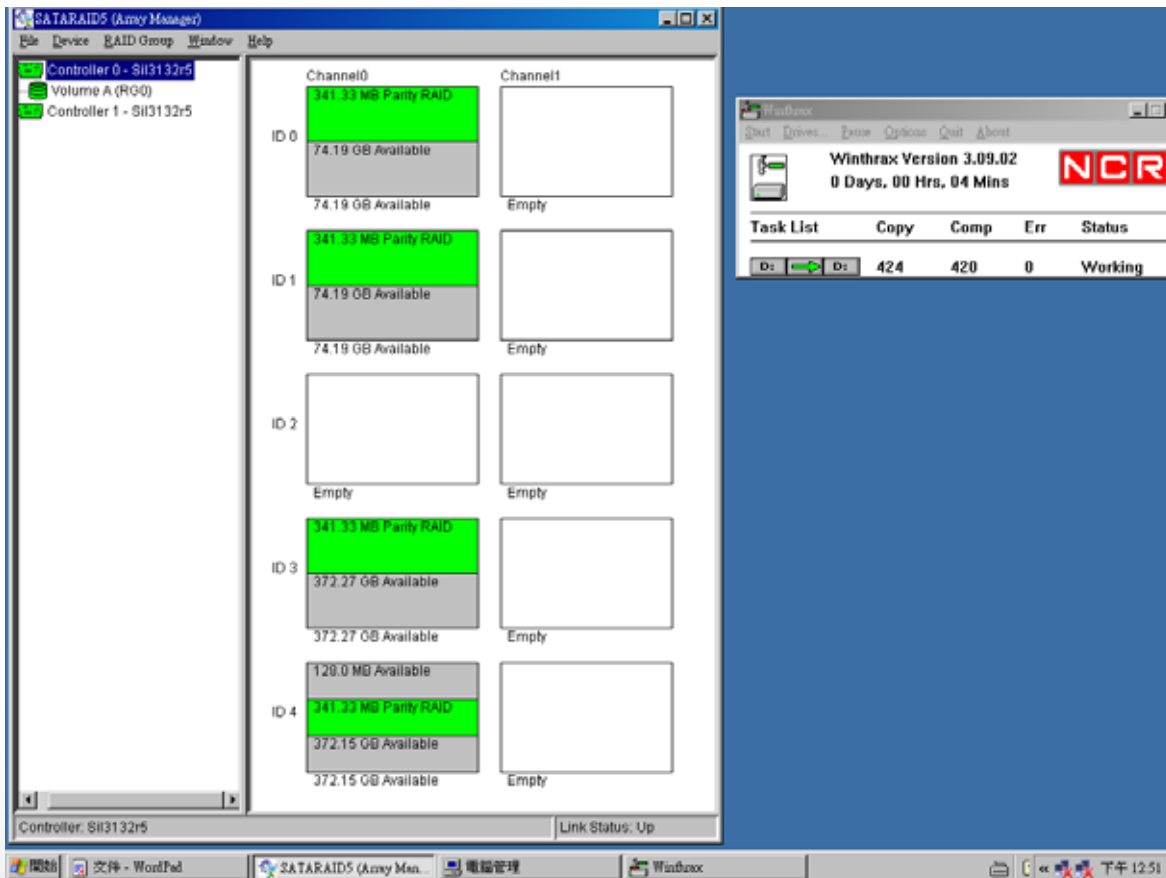
Pull out HDD3



Array manager – HDD3 lost and rebuild to HDD5 ( Spare HDD ) and Burning program still keep running



When rebuilding finished, this



Q: Pls inform the OS compatibility of the bundled GUI?

A: Presently, Windows only.

Q: What can I do to a RAID version **host interface**, if I just want to use OS built-in RAID?

A: Pls make all 5 HDDs as contiguous, then made dynamic volumes and used OS built-in RAID-5